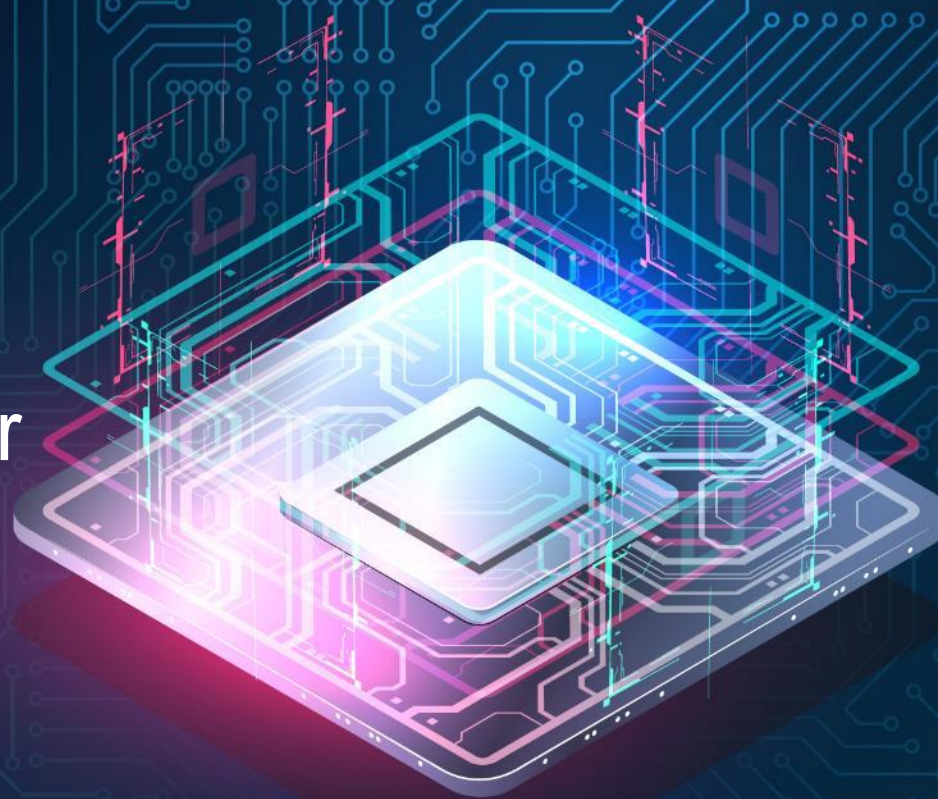




Photo IC for Rotary Encoder Elemental technology

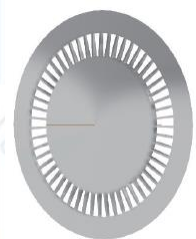


YITOA MICRO TECHNOLOGY CORPORATION

Customization for customer demands

<Features>

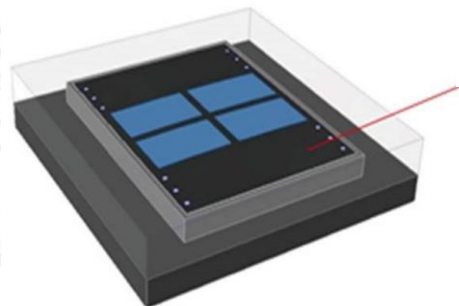
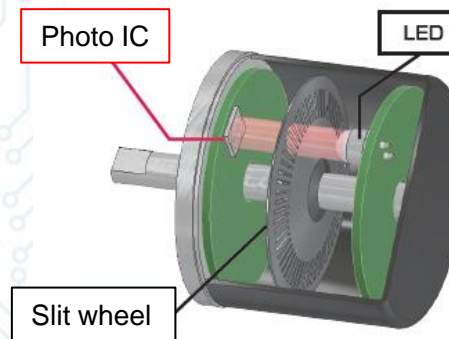
- Photo diode array
 - full custom shapes available
 - fine pitch design
 - On chip fixed Slit plate by metal layer
- Electric circuit
 - Trans-Impedance Amp
 - LED Auto Power Control
 - I2C communication I/F etc,
- Anti-reflection film(black-coating) to prevent reflection from chip surface.



Slit wheel



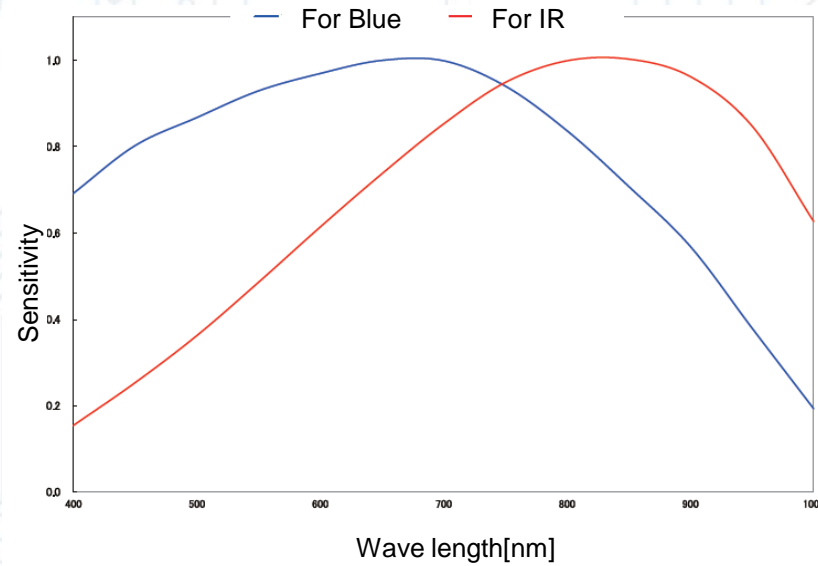
Photo IC



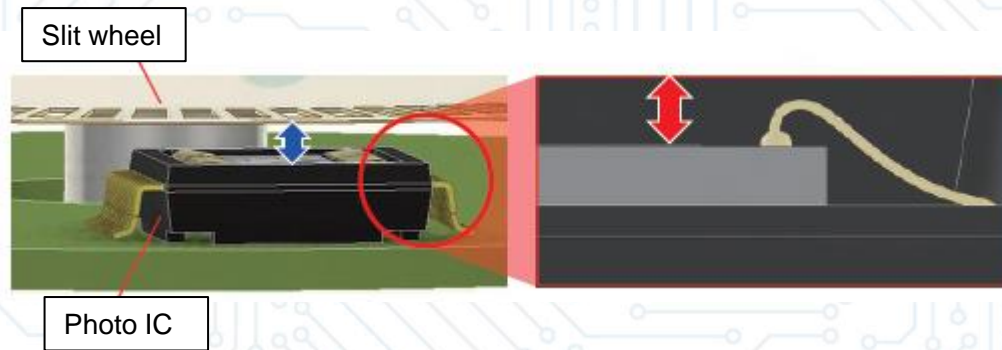
Low reflection film

Analog Front-End Photo IC for Optical Rotary Encoder

■ Photo diode sensitivity customization

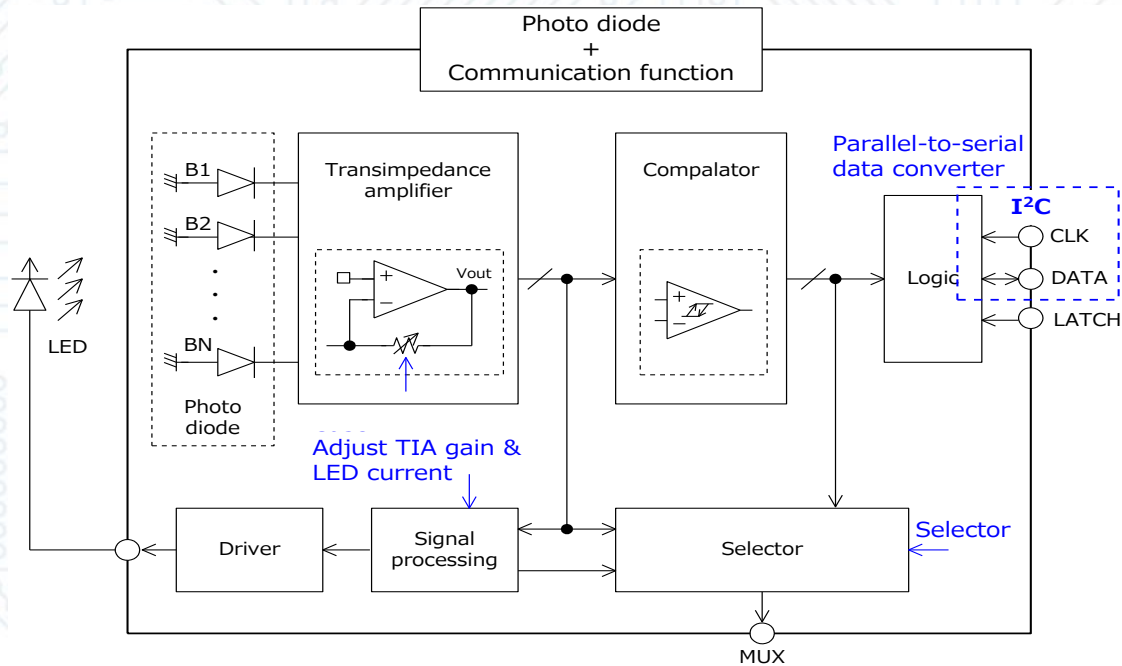


■ Short distance between Photodiode surface and package surface



Analog Front-End Photo IC for Optical Rotary Encoder

- LED can be mount on Si chip or same package (for reflective type)
–Now on developing–
- Example of block diagram



- Example of Various Package

