

Electromagnetic MEMS mirror



Product overview

These product are high performance MEMS mirrors for dual axis laser scanner. The mirror formed on a silicon substrate by MEMS technology can be scanned horizontally and vertically by electromagnetic drive.

Features

- Dual axis integrated type
- Wide FOV (Filed Of View)
- Low drive voltage
- Built-in angle sensor and temperature sensor
- Compact and lightweight
- Automotive reliability
- Low power consumption

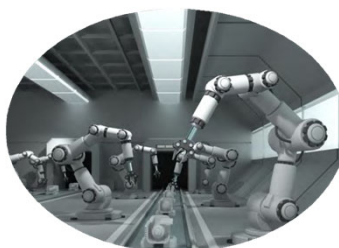
Specifications

		CG0006AR/BR	CG0007AR	CG0008AR	CG0009AR
Appearance					(TBU)
Mirror size [mm]		Φ3.6x4.0	Φ1.0x1.1	Φ8.0	Φ1.6x1.6
Package size [mm]		19.2x18.5x6.59	12.2x12.3x6.28	24.8x23.14x7.58	12.9x13.47x6.28
1st Axis (V)	Operation mode	Linear	Linear	Linear	Linear
	Drive frequency (Typ.) [Hz]	1~100 (20)	1~100 (60)	1~70 (10)	1~70 (10)
	Optical FOV	±15°	±14.5°	±12.5°	±15°
2nd Axis (H)	Operation mode	Resonant	Resonant	Resonant	Resonant
	Resonance Frequency [Hz]	1115	27k	800	20k
	Optical FOV	±30°	±25°	±15°	±20°
Target wavelength [nm]		905-1550	400-700	905-1550	400-700
Reflectivity		95%(AR) 96%(BR)	90%	98%	90%
Status		Samples available	Samples available	Samples available	Samples available
Application		3D LiDAR	Projection display	3D LiDAR	Projection display

Applications



3DLiDAR for automotive



3D LiDAR for FA



Projection Display

